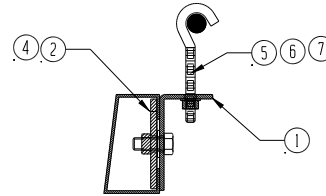


SECTION A-A



SECTION B-B

**TOP AND BOTTOM GRIPPER BARS
REQUIRE THREE PULL POINTS PER BAR
*SIDE GRIPPER BARS REQUIRE 4 PULL POINTS PER BAR

REV	NO	DESCRIPTION	DATE	BY
F	62N 141	REMOVED SAFETY WASHERS	8/1/06	BLM
E	4619	ITEM 7 WAS ORODOK	3/5/04	BLM
D	4618	ITEM 5 WAS 103018, UPDATED VIEWS	3/5/04	BLM
C		CHANGED QTY AND DESCRIPTION OF ITEM 10	12/4/02	BLM
B		CHANGED ITEMS 1 THROUGH 7 TO 32 FROM 22 AND ADDED NOTES	11/4/02	BLM
A	U	ADDED ITEM 10 AND CHANGED DESCRIPTION OF ITEM 5	10/18/02	BLM

ITEM #	QTY	PART NUMBER	DESCRIPTION
10	1	-	REQUIRED VINYL SIZE - 13' X 47'
9	8	GR7512	3/4" DIA - 12' GRIPPER BAR
8	2	GR7514	3/4" DIA. - 14' GRIPPER BAR
7	32	040207	3/8-16 NYLON LOCK NUT
6	32	050004A	FLAT WASHER
5	32	103019	3/8-16 X 4" GRIPPER ROD BOLT
4	32	020006	1/2-13 X 1 1/4" HX HD. CAP. SCREW
3	-	-	-
2	32	1007039	CHANNEL NUT
1	32	1008126	CHANNEL BRACKET

THIS DRAWING IS THE PROPERTY OF TIFFIN METAL PRODUCTS AND IS DISCLOSED IN CONFIDENCE TO THE EXTENT IT'S SUBJECT MATTER IS ORIGINAL WITH TIFFIN METAL PRODUCTS. ANY COMPANY RECEIVING THIS DRAWING FROM TIFFIN METAL PRODUCTS SHALL HOLD AND USE THIS DRAWING FOR THE SOLE BENEFIT OF TIFFIN METAL PRODUCTS AND SHALL NOT DISCLOSE IT TO, OR USE OR REPRODUCE IT FOR, ANY THIRD PARTY, OR PERFORM ANY ACT ADVERSE TO THE INTEREST OF TIFFIN METAL PRODUCTS WITH RESPECT TO THIS DRAWING WITHOUT THE EXPRESS WRITTEN PERMISSION OF TIFFIN METAL PRODUCTS.

TOLERANCE SHALL NOT BE CUMULATIVE	
TOLERANCES SHALL BE: FRACTIONS +/- 1/32"	
DECIMAL: 0 +.030 - .00 +.015 .000 +.005	
MINIMUM BEND RADIUS = MATERIAL THICKNESS	
MATERIAL	C
FINISH	C

TIFFIN
METAL PRODUCTS

BACK DROP KIT
14' 0" X 48' 0"

OR EBL M	DATE 9/10/02
CH	DATE
SCALE 1:1	
DRG NO	
0BD140480 SH1	