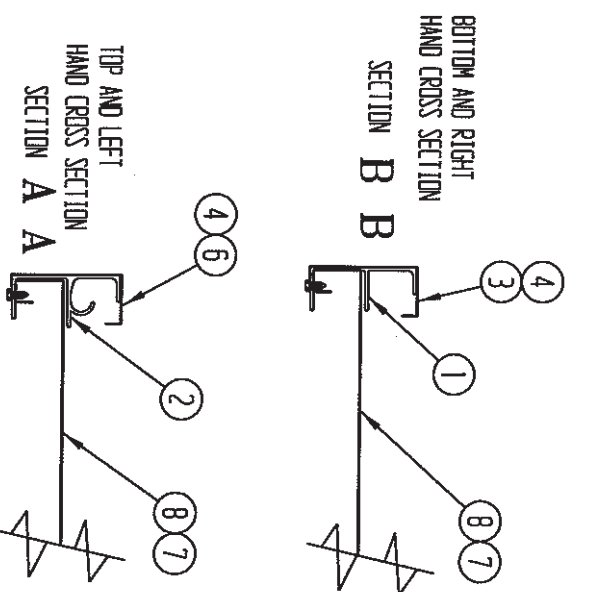


ITEM	QTY	PART #	DESCRIPTION
1	10	1007261	BOTTOM AND END TRIM BRACKET
2	13	241121	TOP AND END TRIM BRACKET
3	2	1005820	BOTTOM WELDING (PART OF 1005819)
4	2	1005821	END WELDING (PART OF 1005819)
5	4	1008272	RADIUS CORNER
6	2	1005822	TOP WELDING (PART OF 1005819)
7	1	1005829	RADIUS 21" HORIZONTAL SECTION
8	5	1154	18" HORIZONTAL SECTIONS (1005829)
9	1	1005830	RADIUS 18" HORIZONTAL SECTION
10	2	1005828	WELD SPACE (PART OF 1005819)
11	3	1005781	SPRIT
12	2	1005831	LADDER STEP
13	28	103005	2" HEX BOLT
14	28	040004	3/8-16 HEX NUT
15	4	1003639	HANGER PLATE
16	4	050004A	3/8" FLAT WASHER
17	24	050005A	1/2 FLAT WASHER
18	12	020005	1/2-13 x 1-1/4 BOLT
19	12	040005	1/2-13 HEX NUT
20	100	030051	110 x 3/4 SELF DRILLING TORX SCREWS, STN ST.



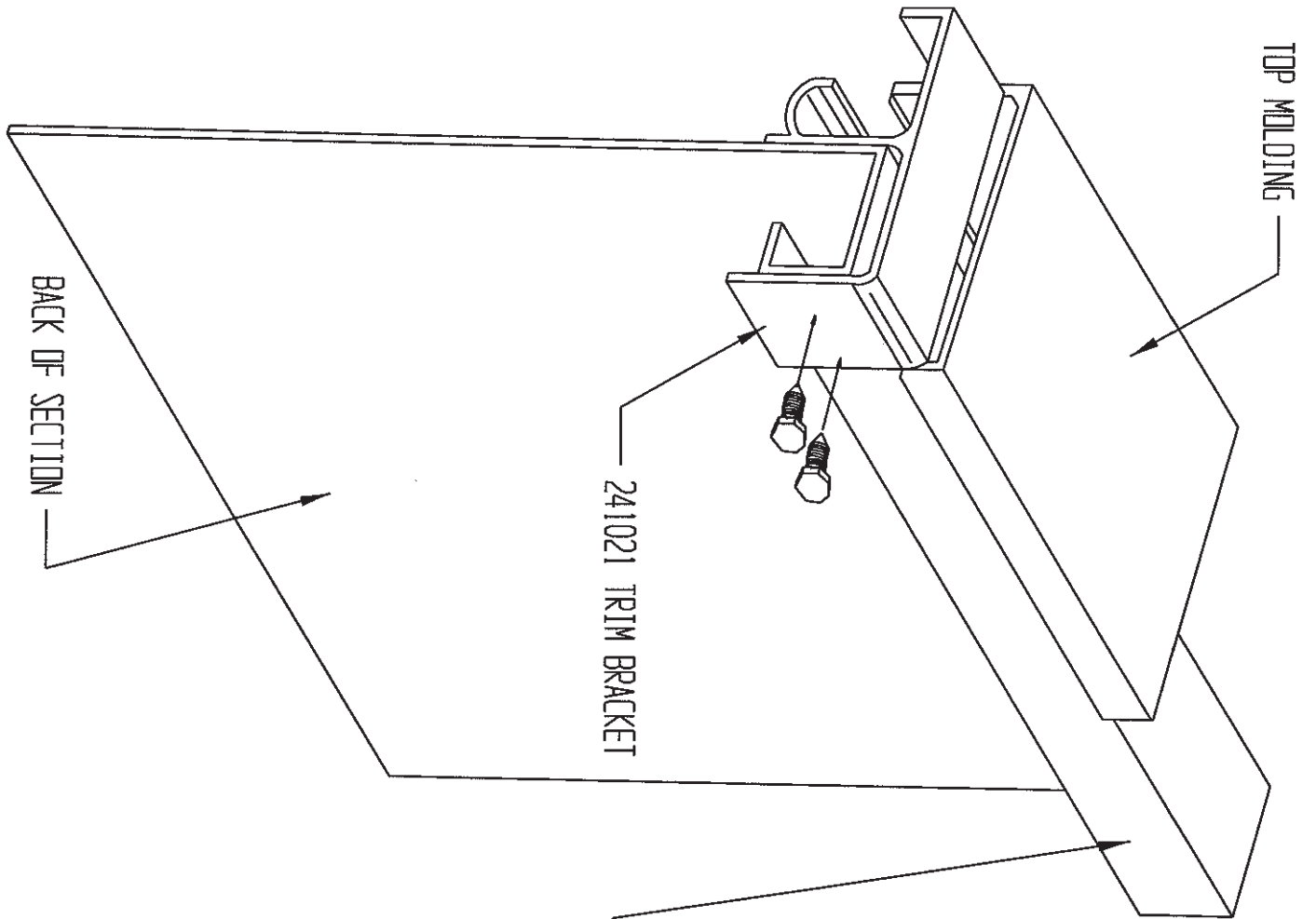
WIND LOAD SPECIFICATIONS

DESIGNED PER THE 2000 INTERNATIONAL AND 2001 FLORIDA BUILDING CODES
 DESIGN WIND PRESSURE IS 30.4 PSF
 DESIGN WIND SPEED IS 130 MPH, EXPOSURE 'B' AT 50' OVERALL HEIGHT
 -REQUIRES 3 SPRITS AT SPECIFIED DIMENSIONS***
 -IMPORTANCE FACTOR = 1.0
 -APPROVED FOR METAL AND WOOD POLE STRUCTURES
 -RECOMMENDED TORQUE VALUE FOR ALL FASTENERS IS 25 FOOT POUNDS
 -HANGER BRACKETS TO BE INSTALLED ON END SPRITS

ITEM	QTY	DESCRIPTION	UNIT	PRICE
A	1	WIND WASH BRACKET	EA	
B	1	WIND WASH BRACKET	EA	
C	1	WIND WASH BRACKET	EA	
D	1	WIND WASH BRACKET	EA	
E	1	WIND WASH BRACKET	EA	

TOP-FIN
METAL PRODUCTS

(3) SPRIT, 30.4 PSF
 HORIZONTAL RADIUS CORNER
 1175B ASSY

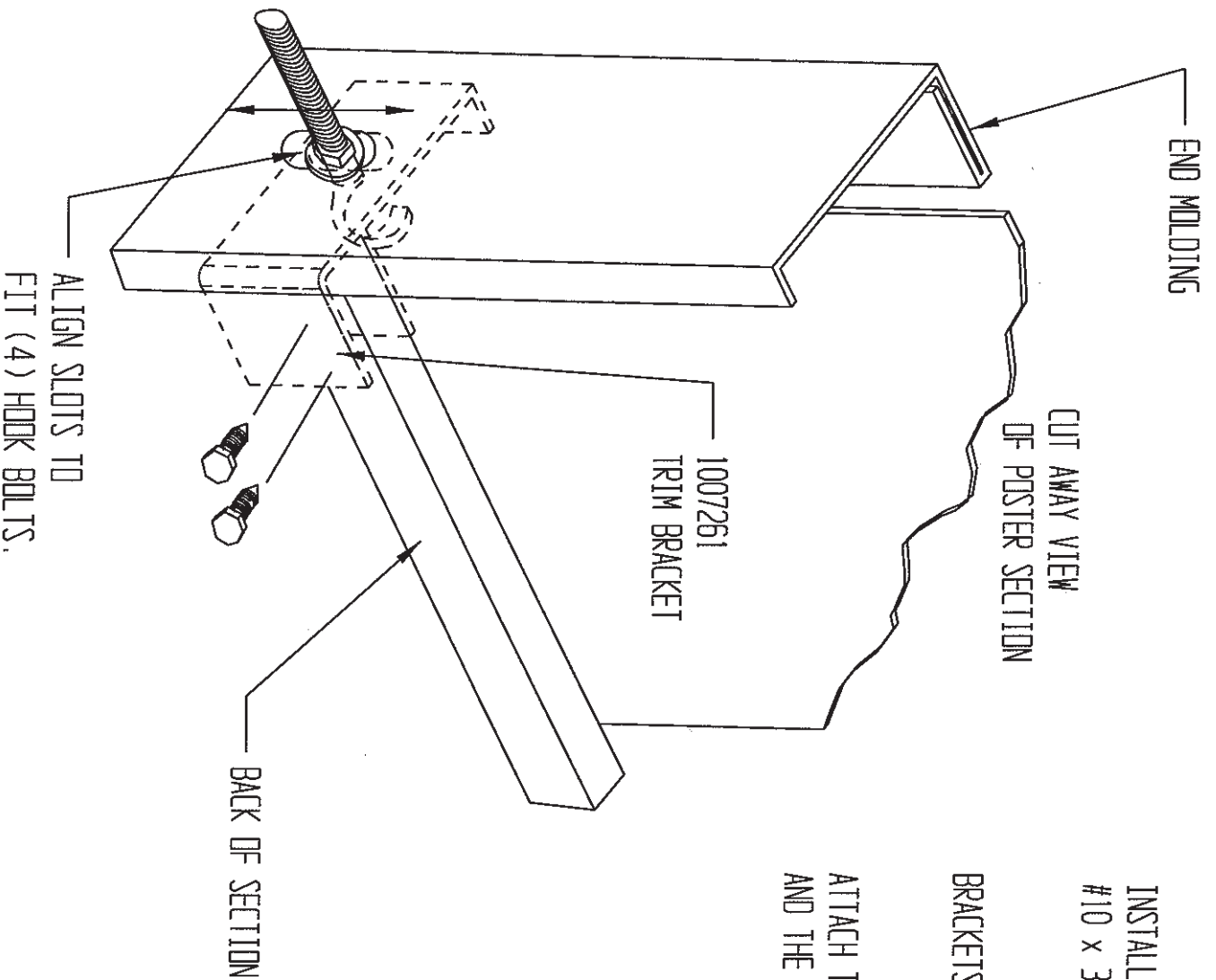


INSTALL 241021 TRIM BRACKETS WITH (2)
 030051 #10 x 3/4" SELF DRILLING STAINLESS SCREWS .
 BRACKETS TO BE INSTALLED PER ASSEMBLY DRAWING.
 ATTACH THE TOP AND END MOLDING TO 241021 TRIM BRACKETS
 AND THE BACK OF THE POSTER SECTION USING (030053) SCREWS.
 POSTER SECTION-TOP

8	CHANGED 030053 TO 030051	3/18/05	RLM
A	CHANGED PART NUMBER TO 1008457 FROM 1029 AND CLEARED UP NOTES	6/22/03	RLM
REV	NO DESCRIPTION	DATE	BY

TOPFIN
 METAL PRODUCTS

INSTALLATION OF TOP AND END TRIM BRACKETS		DR JIM FOX	DATE 11-2-98
OR	SCALE	DATE	
DWG NO	1008457		



INSTALL 1007261 TRIM BRACKETS WITH (2) 030051 #10 x 3/4" SELF DRILL STAINLESS SCREWS .

BRACKETS TO BE INSTALLED PER ASSEMBLY DRAWING.

ATTACH THE BOTTOM AND END MOLDING TO 1007261 TRIM BRACKETS AND THE BACK OF THE POSTER SECTION USING (030053) SCREWS.

0	CHANGED 03053 TO 03051	3/18/05	BJM
A	CHANGED PART NUMBER TO 1008458 FROM 1007261	6/24/03	BJM
REV NO	DESCRIPTION	DATE	BY

TOPFIN
METAL PRODUCTS

INSTALLATION OF BOTTOM AND END TRIM BRACKETS

DR	JIM FIX	DATE	1-3-98
CH		DATE	
SCALE			
DWG NO	1008458		