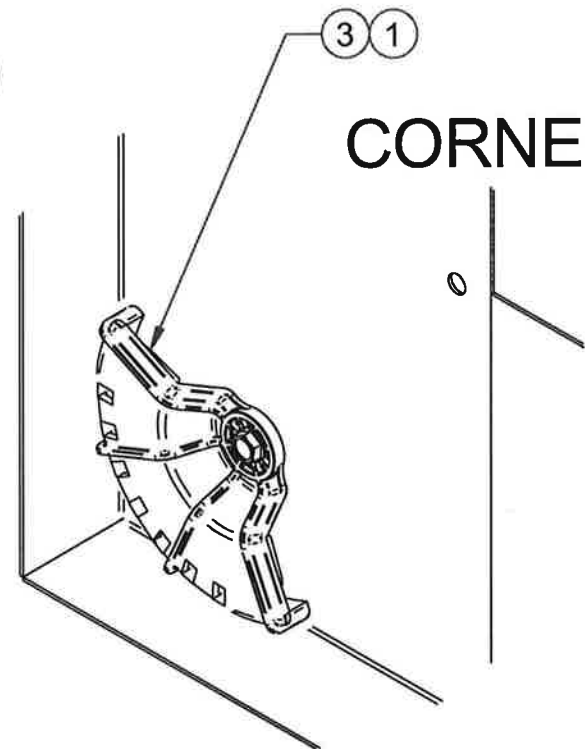
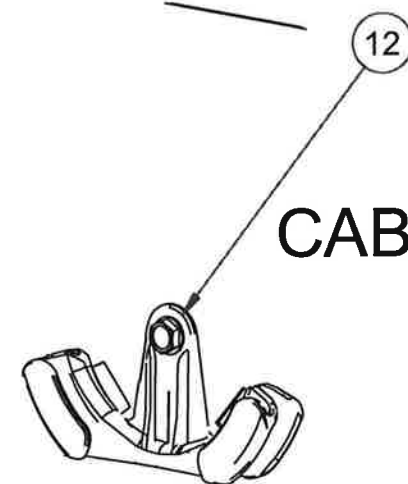


DETAIL A

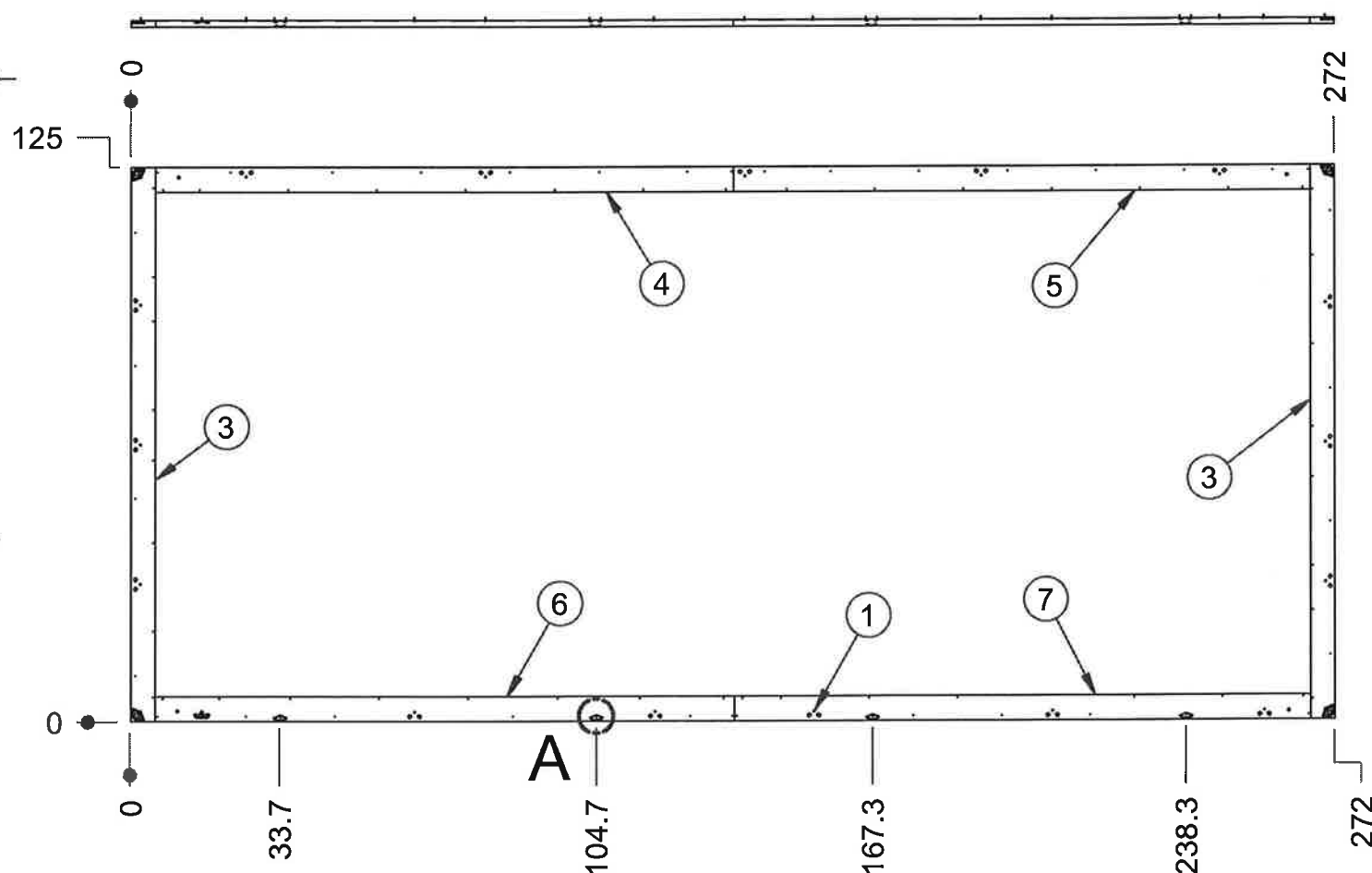


CORNER COVER



CABLE GUIDE

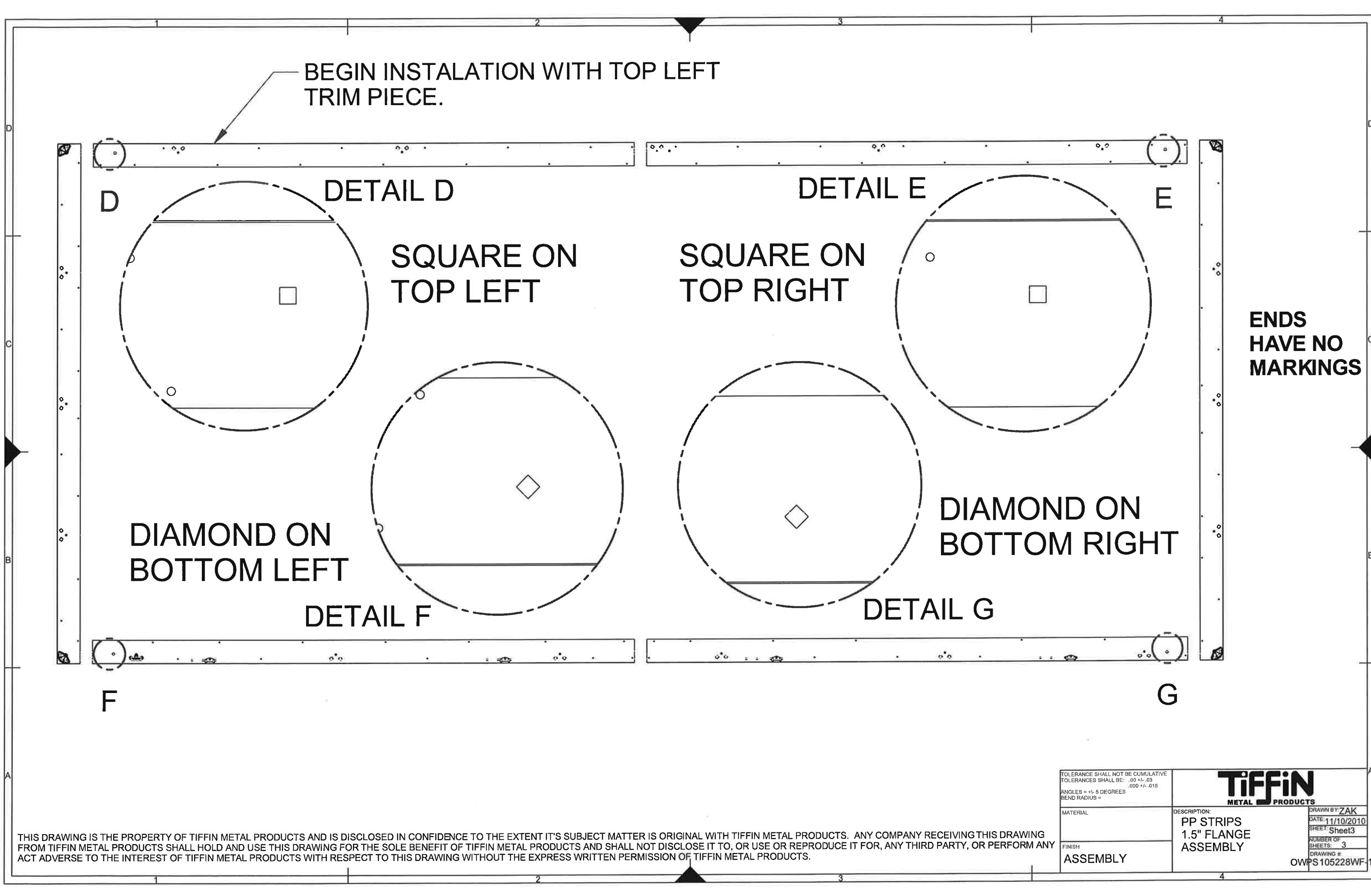
Item #	Title	Comments	Qty
3	1010721	END STRIP PP 1.5" FLANGE HARD TOOLED	2
4	1010722	TOP LEFT STRIP PP 1.5" FLANGE HARD TOOLED	1
5	1010723	TOP RIGHT STRIP PP 1.5" FLANGE HARD TOOLED	1
6	1010724	BOTTOM LEFT STRIP PP 1.5" FLANGE HARD TOOLED	1
7	1010725	BOTTOM RIGHT STRIP PP 1.5" FLANGE HARD TOOLED	1



10000014 G/W/GB/OB BAG ASSEMBLY			
ITEM#	PART#	DESCRIPTION	QTY.
1	030051	#10X3/4 TEK SCREW	100
2	1010477	(100) 030056 SCREWS	1
8	1010813 G/W/GB/OB	BOTTOM WINDGUARD BRACKET	4
9	1010976 G/W/B	CORNER COVER	4
10	162030 G/W/B	RADIUS CORNER INSERT	5
11	07248-10	(100) #8 X 1- 3/4 SCREWS	1
12	162031 G/W/B	CABLE GUIDE W/HOLE	19
13	OWPS105228WF-1 S1,2,3	ASSY DWGS	1

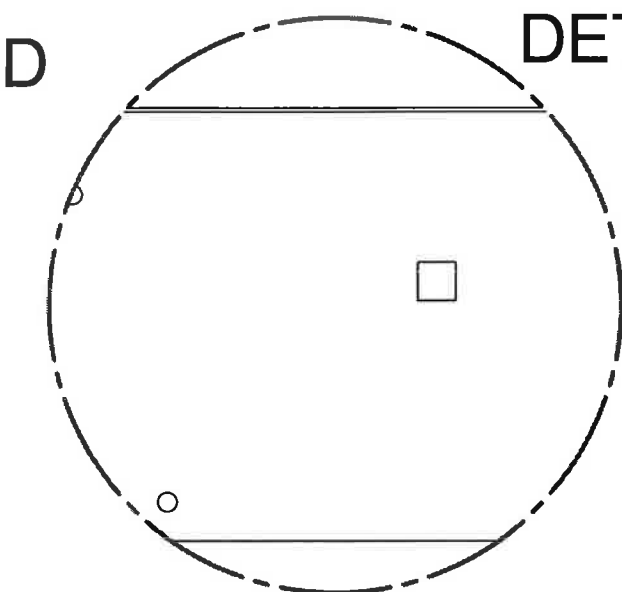
THIS DRAWING IS THE PROPERTY OF TIFFIN METAL PRODUCTS AND IS DISCLOSED IN CONFIDENCE TO THE EXTENT IT'S SUBJECT MATTER IS ORIGINAL WITH TIFFIN METAL PRODUCTS. ANY COMPANY RECEIVING THIS DRAWING FROM TIFFIN METAL PRODUCTS SHALL HOLD AND USE THIS DRAWING FOR THE SOLE BENEFIT OF TIFFIN METAL PRODUCTS AND SHALL NOT DISCLOSE IT TO, OR USE OR REPRODUCE IT FOR, ANY THIRD PARTY, OR PERFORM ANY ACT ADVERSE TO THE INTEREST OF TIFFIN METAL PRODUCTS WITH RESPECT TO THIS DRAWING WITHOUT THE EXPRESS WRITTEN PERMISSION OF TIFFIN METAL PRODUCTS.

<small>TOLERANCE SHALL NOT BE CUMULATIVE TOLERANCES SHALL BE: .00 +/- .03 ANGLES = +/- 5 DEGREES BEND RADIUS =</small>			<small>DRAWN BY: ZAK DATE: 11/10/2010 SHEET: Sheet1 NUMBER OF SHEETS: 3 DRAWING #:</small>
<small>MATERIAL:</small> ASSEMBLY	<small>DESCRIPTION:</small> PP STRIPS 1.5" FLANGE ASSEMBLY		<small>OWPS105228WF-1</small>



BEGIN INSTALATION WITH TOP LEFT TRIM PIECE.

ENDS HAVE NO MARKINGS

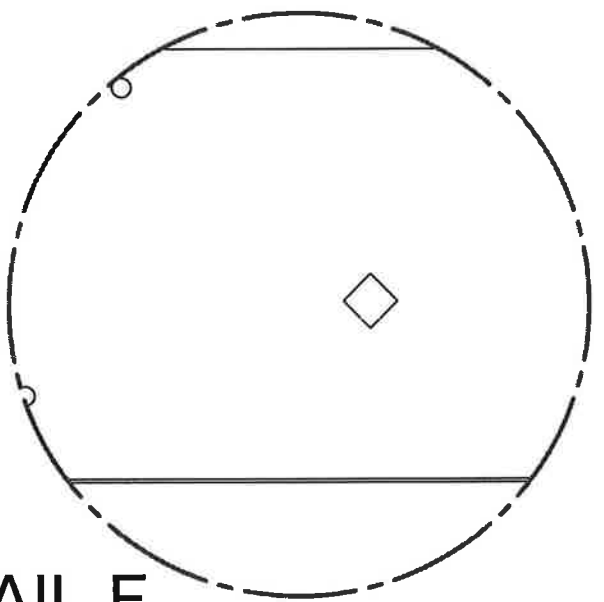


DETAIL D

SQUARE ON TOP LEFT

DIAMOND ON BOTTOM LEFT

DETAIL F

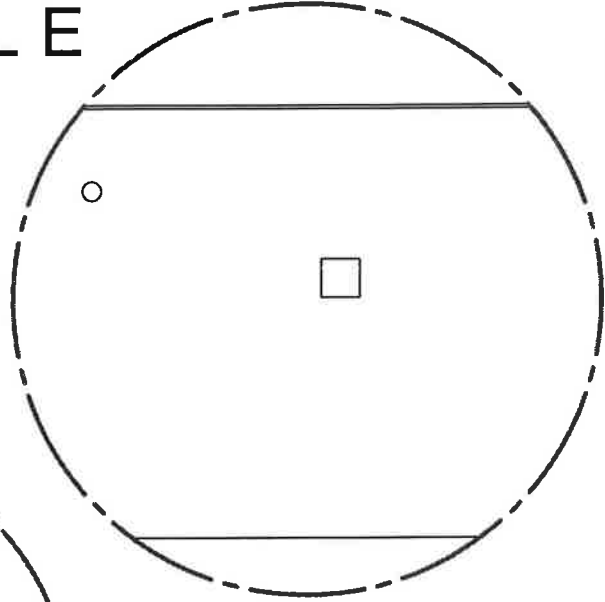
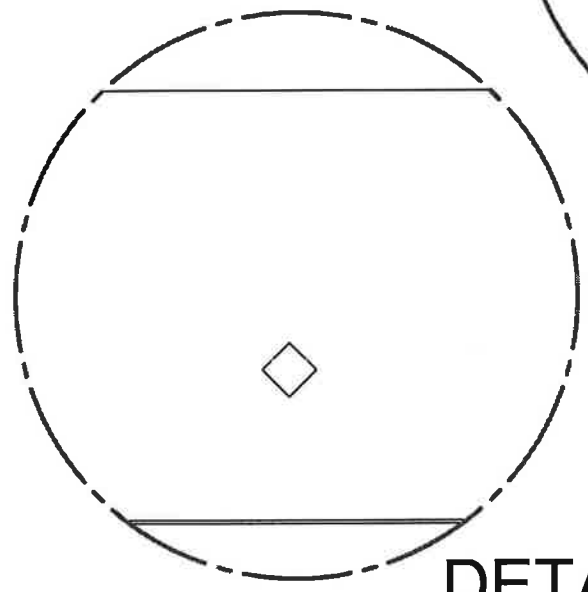


DETAIL E

SQUARE ON TOP RIGHT

DIAMOND ON BOTTOM RIGHT

DETAIL G



G

THIS DRAWING IS THE PROPERTY OF TIFFIN METAL PRODUCTS AND IS DISCLOSED IN CONFIDENCE TO THE EXTENT IT'S SUBJECT MATTER IS ORIGINAL WITH TIFFIN METAL PRODUCTS. ANY COMPANY RECEIVING THIS DRAWING FROM TIFFIN METAL PRODUCTS SHALL HOLD AND USE THIS DRAWING FOR THE SOLE BENEFIT OF TIFFIN METAL PRODUCTS AND SHALL NOT DISCLOSE IT TO, OR USE OR REPRODUCE IT FOR, ANY THIRD PARTY, OR PERFORM ANY ACT ADVERSE TO THE INTEREST OF TIFFIN METAL PRODUCTS WITH RESPECT TO THIS DRAWING WITHOUT THE EXPRESS WRITTEN PERMISSION OF TIFFIN METAL PRODUCTS.

TOLERANCE SHALL NOT BE CUMULATIVE TOLERANCES SHALL BE: .00 +/- .03 ANGLES = +/- 5 DEGREES BEND RADIUS = .000 +/- .015		TIFFIN METAL PRODUCTS	DRAWN BY: ZAK DATE: 11/10/2010 SHEET: Sheet 3 NUMBER OF SHEETS: 3 DRAWING #: OWPS105228WF-1
MATERIAL	DESCRIPTION: PP STRIPS 1.5" FLANGE ASSEMBLY		
FINISH	ASSEMBLY		

STEP 1: Place the top left trim on top left side of the board. This part has a square on the far left side. Fasten trim and cable guides to existing board using provided screws.


STEP 2: Place top right trim on the top right side of the board. This part has a square on the far right side. Fasten trim and cable guides to existing board using provided screws.

STEP 3: Place side trim pieces vertically and fasten to the board using provided screws. Secure trim and cable guides to the board with the provided screws.

STEP 4: Place the slotted bottom left trim on the bottom left side of the board. This part has a diamond on the far left side. Fasten trim and cable guides to existing board with provided screws.

STEP 5: Place the slotted bottom right hand trim on the bottom right side of the existing board. Secure trim and cable guides with screws provided.

THIS DRAWING IS THE PROPERTY OF TIFFIN METAL PRODUCTS AND IS DISCLOSED IN CONFIDENCE TO THE EXTENT IT'S SUBJECT MATTER IS ORIGINAL WITH TIFFIN METAL PRODUCTS. ANY COMPANY RECEIVING THIS DRAWING FROM TIFFIN METAL PRODUCTS SHALL HOLD AND USE THIS DRAWING FOR THE SOLE BENEFIT OF TIFFIN METAL PRODUCTS AND SHALL NOT DISCLOSE IT TO, OR USE OR REPRODUCE IT FOR, ANY THIRD PARTY, OR PERFORM ANY ACT ADVERSE TO THE INTEREST OF TIFFIN METAL PRODUCTS WITH RESPECT TO THIS DRAWING WITHOUT THE EXPRESS WRITTEN PERMISSION OF TIFFIN METAL PRODUCTS.

<small>TOLERANCE SHALL NOT BE CUMULATIVE TOLERANCES SHALL BE: .00 +/- .03 ANGLES = +/- 5 DEGREES .000 +/- .015 BEND RADIUS =</small>			<small>DRAWN BY: ZAK DATE: 11/10/2010 SHEET: Sheet4 NUMBER OF SHEETS: 3 DRAWING #: OWPS 105228WF-1</small>
<small>MATERIAL</small> <small>FINISH</small> ASSEMBLY	<small>DESCRIPTION:</small> PP STRIPS 1.5" FLANGE ASSEMBLY		