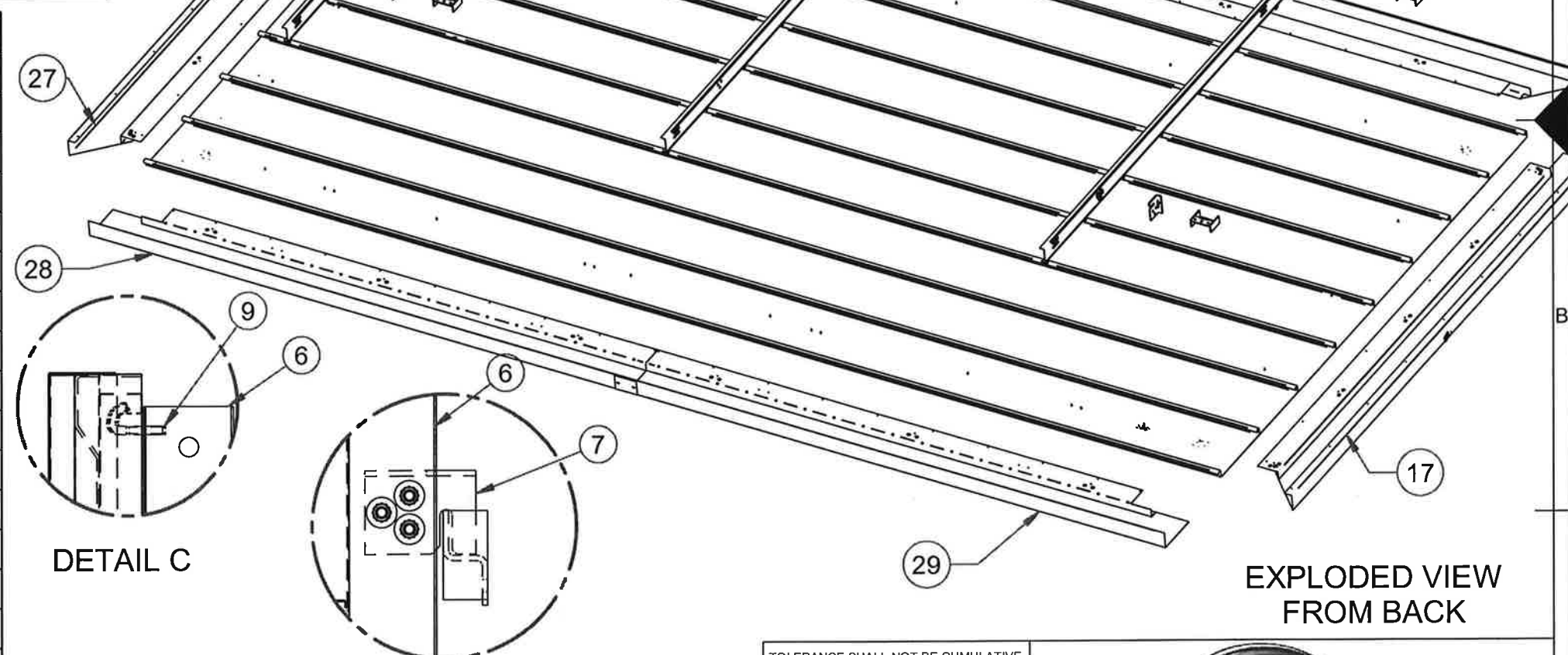


Item #	Quantity	Sales #	Eng #	Part Description
1	8	1163	1003637	RIB-LOK HORIZONTAL SECTION
6	3	1143	1003638	SPRIT 12' 2-1/4"
7	4	1149	1003639	SPRIT MOUNTING HANGER PLATE W/HARDWARE
8	4		1003663	H CONTAINMENT BRACKET
9	27	1139	103005	2" HOOK BOLT W/NUT
10	24	050005A	050005A	1/2" FLAT WASHER TO GO W/ SALES #1149
11	12	040005	040005	1/2-13 HEX NUT TO GO W/ SALES #1149
12	12	020006	020006	1/2-13 x 1-1/4 BOLT TO GO W/ SALES #1149
13	27	040004	040004	3/8-16 HEX NUT TO GO W/ SALES #1139
14	28	050004A	050004A	3/8" FLAT WASHER TO GO W/ SALES #1139
15	60	030052	030052	#14 x 3/4" TEK SCREW
17	1	1010820	1010820	LEFT SIDE TRIM 11"F WINDGUARD
20	2	1010814	1010814	
21	4	1010813	1010813	
22	2	1010826	1010826	6" SPLICE CHANNEL
23	2	1010815	1010815	
25	1	1010821	1010821	TOP LEFT TRIM 11"F WINDGUARD
26	1	1010822	1010822	TOP RIGHT TRIM 11"F WINDGUARD
27	1	1010825	1010825	RIGHT SIDE TRIM 11"F WINDGUARD
28	1	1010823	1010823	BOTTOM RIGHT TRIM 11"F WINDGUARD
29	1	1010824	1010824	BOTTOM LEFT TRIM 11"F WINDGUARD



WIND LOAD SPECIFICATIONS
 DESIGNED PER THE 2000 INTERNATIONAL AND 2001 FLORIDA BUILDING CODES
 DESIGN WIND PRESSURE IS 30.4 PSF
 DESIGN WIND SPEED IS 130 MPH, EXPOSURE "B" AT 50' OVERALL HEIGHT
 REQUIRES 3 SPRITS AT SPECIFIED DIMENSIONS***
 IMPORTANCE FACTOR = 1.0
 APPROVED FOR METAL AND WOOD POLE STRUCTURES
 RECOMMENDED TORQUE VALUE FOR ALL FASTENERS IS 25 FT LBS

TOLERANCE SHALL NOT BE CUMULATIVE
 TOLERANCES SHALL BE: .00 +/- .03
 .000 +/- .015
 ANGLES = +/- 5 DEG
 BEND RADIUS =

MATERIAL

FINISH

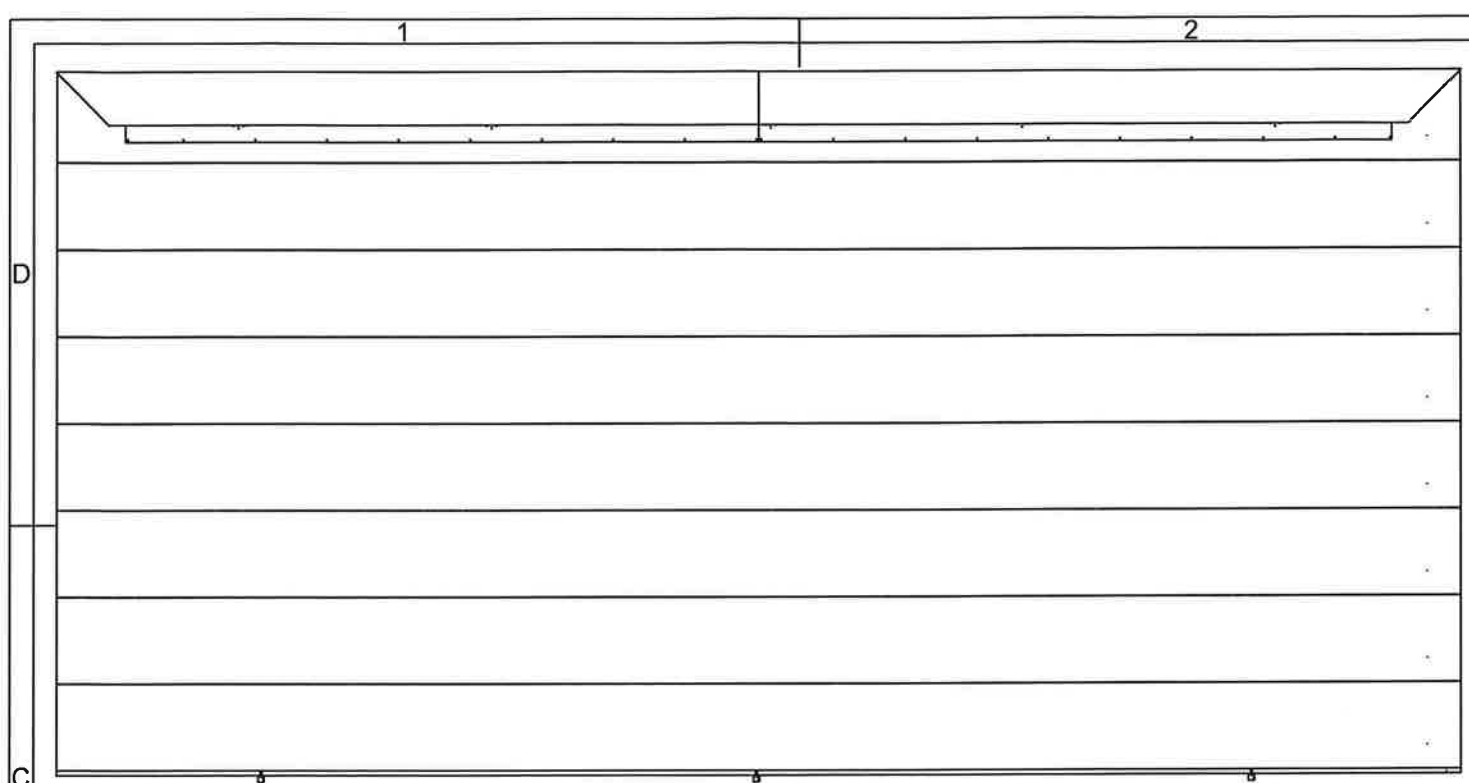
Tiffin
 METAL PRODUCTS

HORIZONTAL FACE
3 SPRIT OWPT11055WP

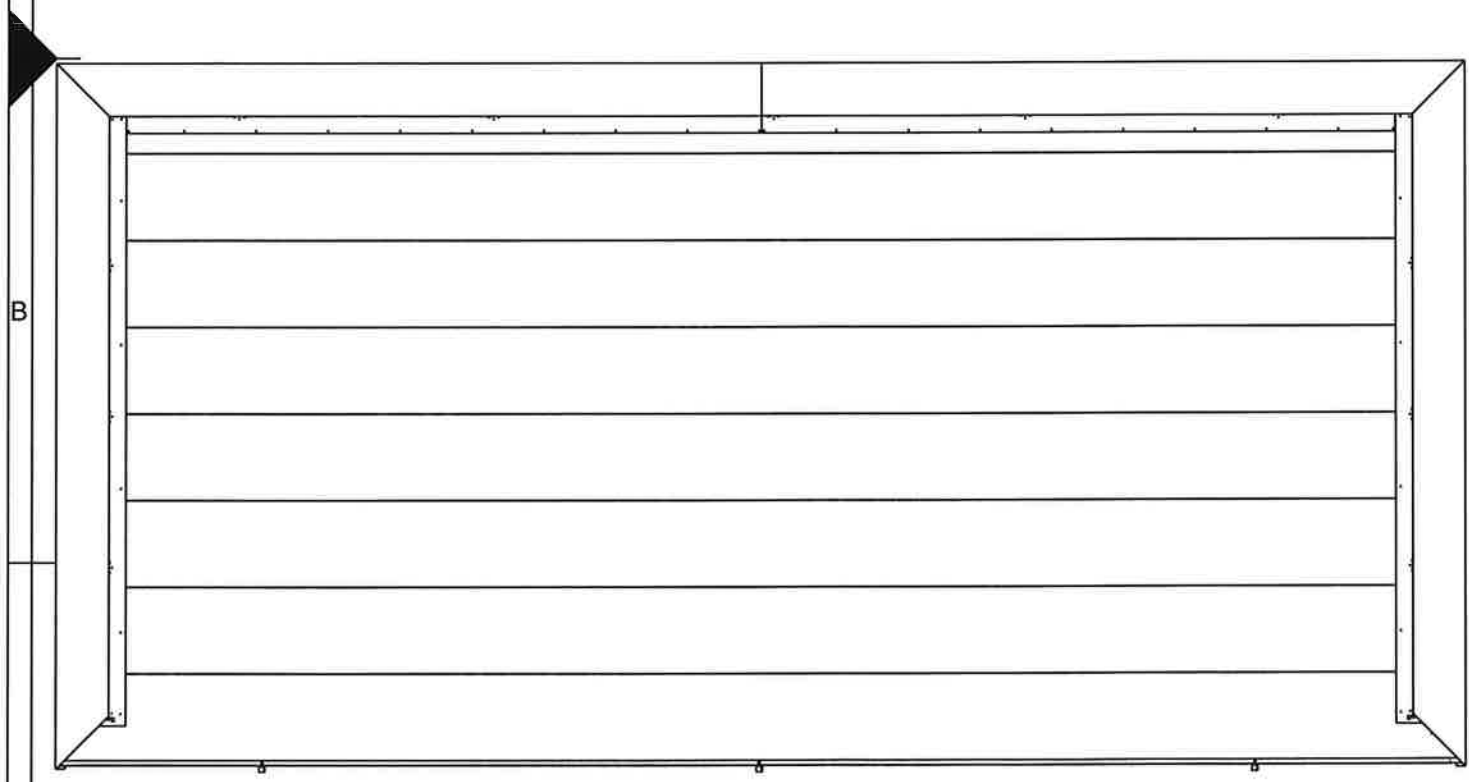
APROX. WEIGHT 1000lb

DR ZAK
 CH
 SCALE
 DWG NO
 OWPT11055WP-1AS SY

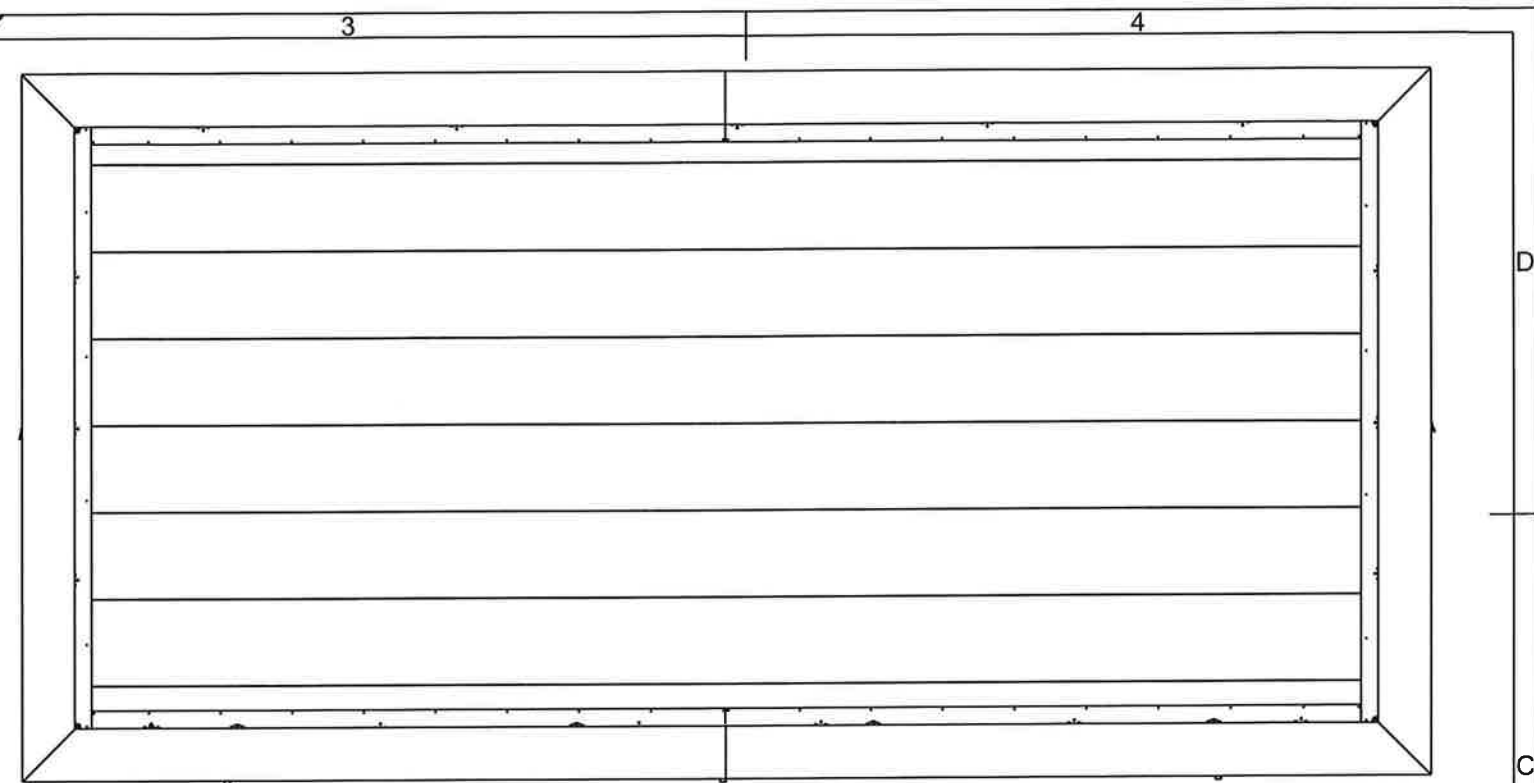
DATE 12/7/2010
 DATE



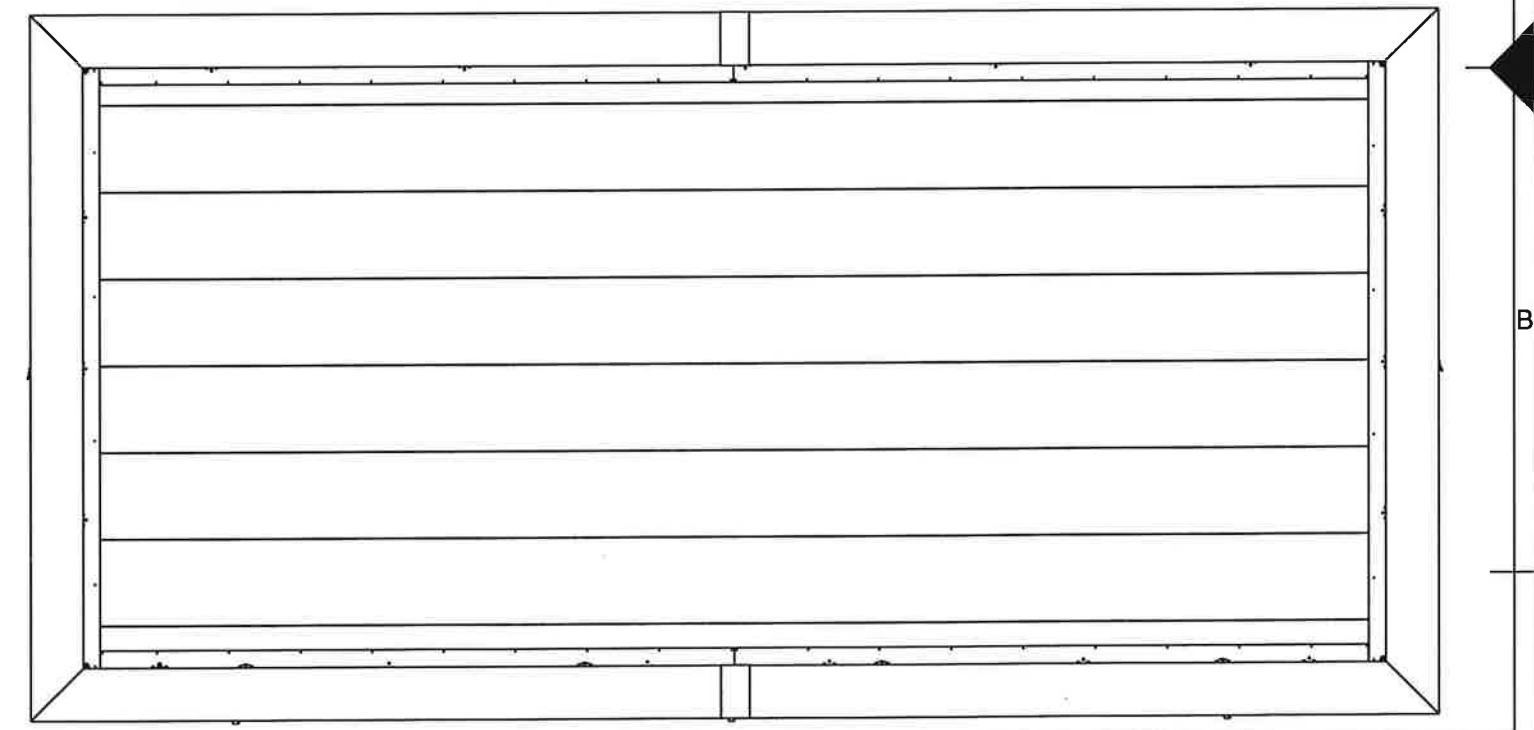
STEP 1
 Begin by fastening the top left and top right trim pieces to the face of the board. Both parts will overlap the side trim pieces. Do not fasten screws near the trim ends.



STEP 2
 Place the side trim pieces vertically and fasten to the face except for at the bottom.

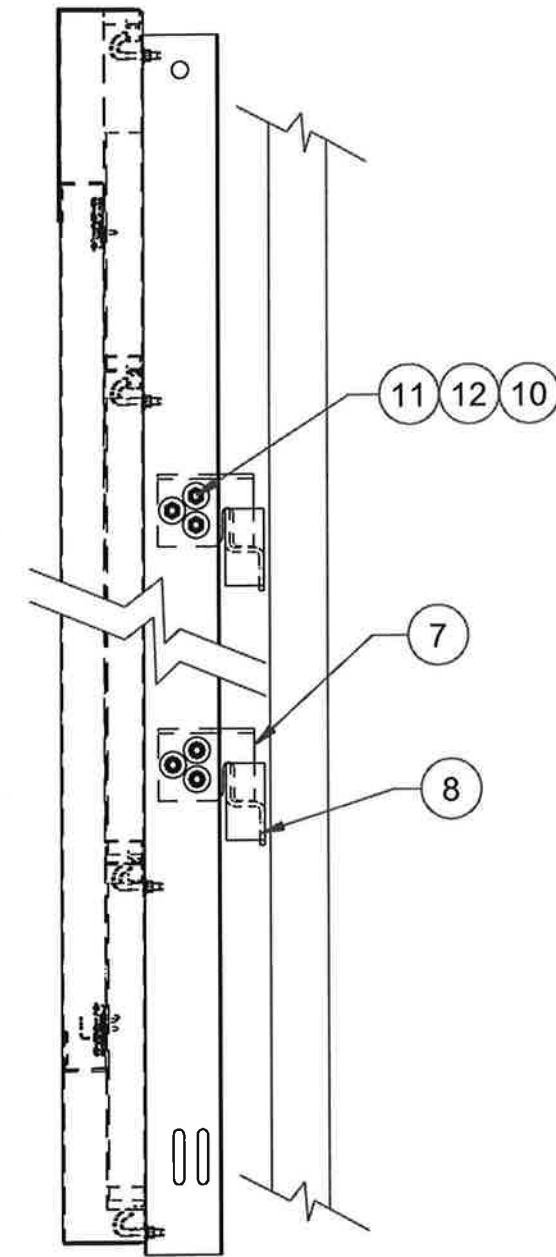
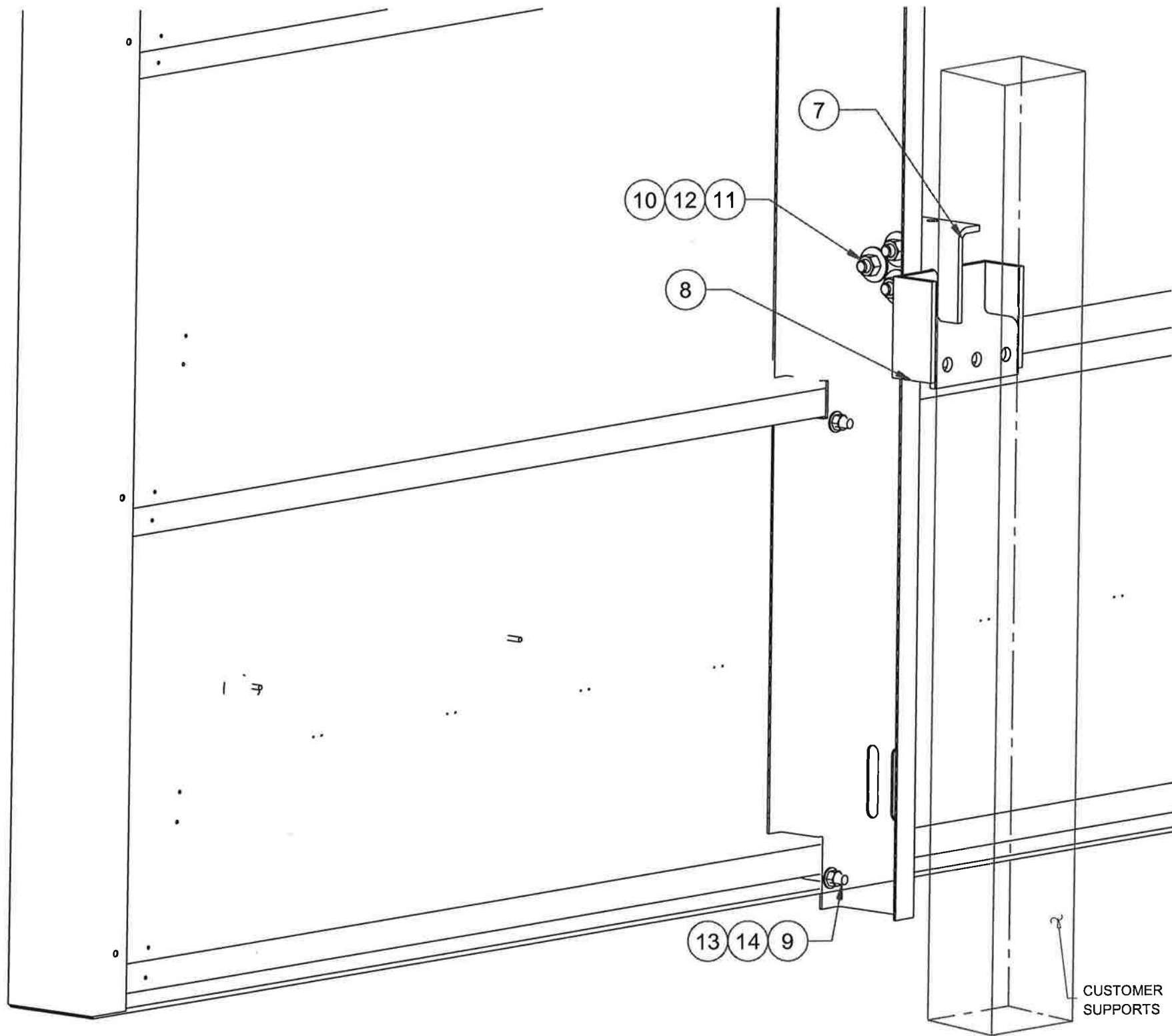


STEP 3
 Place the bottom left and right trim pieces to the board face. The side trim pieces will overlap the bottom pieces. Do not install screws near center of board.



STEP 4
 Install the two splice channels over the top of the seam between the top and bottom two trim pieces. Install all remaining screws.

TOLERANCE SHALL NOT BE CUMULATIVE TOLERANCES SHALL BE: .00 +/- .03 .000 +/- .015			
ANGLES = +/- BEND RADIUS =			
MATERIAL		HORIZONTAL FACE 3 SPRIT OWPT11055WP	
FINISH			
		DR ZAK	DATE 12/7/2010
		CH	DATE
		SCALE	
		DWG NO	
		OWPT11055WP-1AS SY	



TOLERANCE SHALL NOT BE CUMULATIVE
 TOLERANCES SHALL BE: .00 +/- .03
 .000 +/- .015
 ANGLES = +/- 5 DEG
 BEND RADIUS =



MATERIAL	HORIZONTAL FACE 3 SPRIT OWPT11055WP	DR ZAK	DATE 12/7/2010
FINISH		CH	DATE
		SCALE	
		DWG NO	
		OWPT11055WP-1AS SY	